



**Integra
Transform®**

Innovating
for
Performance

BIOSMART – Assembly Guide

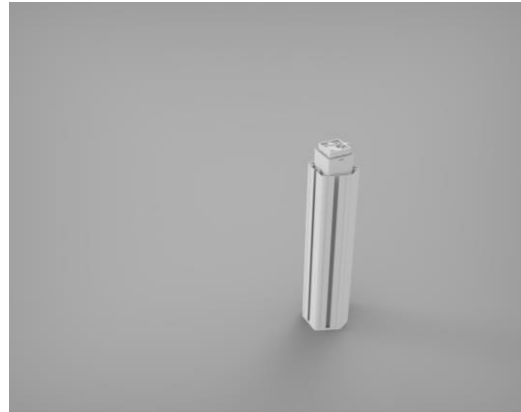


After unboxing, follow these steps to ensure your BioSmart is correctly positioned to meet your personal body posture requirements.

Note: It is recommended that two people are used when assembling a Biosmart.

Step 1: Column

Unpack the *Column assembly* and place it upside down on the ground as shown.



Step 2: Keyboard Tray

Carefully place the *Keyboard Tray* on top of the *Column* then have the second person insert x6 'countersunk tapping screws' with an *Allen key or driver bit*.

Note:

- Align the black column cable to the back of the keyboard tray
- Using the long end of the Allen key for faster insertion, and the short end for final tightening
- The Keyboard tray can be rested on a height adjustable office chair or desk
- Ensure all screws are tight

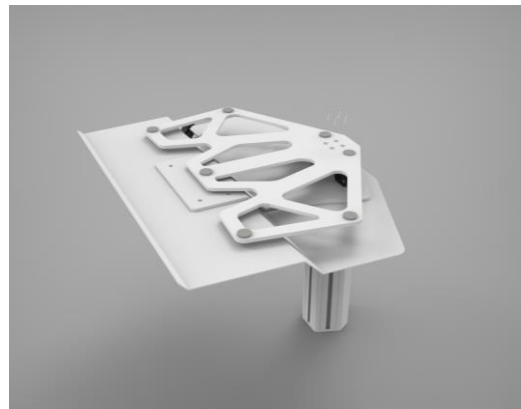


Step 3: Base

Place the *Base* on top of the current assembly (of the *Column* and *Keyboard Tray*) and screw in place with x4 'M6 countersunk screws' with an *Allen key*.

Note:

- Make sure the black column cable is sitting flat before placing on the base
- Ensure all screws are tight



Step 3a: Flip the assembly over

Step 4: Spring nuts

Insert *Spring nuts* into the *column channels*. When mounting a monitor in the centre channel one *Spring nut* is needed (per monitor). When mounting a monitor arm on the left or right slots, x2 *Spring nuts* are needed (per monitor).

Note:

- Squeeze the spring nut to insert, with the spring against your thumb and the front side against your index finger
- Once in place they will not fall



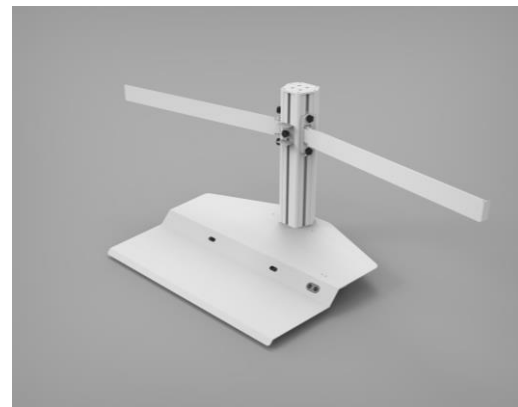
Step 5: Arms and Brackets

Depending on your chosen version:

- Mount a *Centre Bracket* onto the centre column with a *Star Knob*.
- And or mount a *Monitor Arm* on the left and right of the column with x2 *Star Knobs* (per arm)

Note:

- The front of the arm is taller than the back when mounting



Step 6: Attaching monitor mounts

Attach x1 *VESA mount* to each of your monitors with x4 'M4x12 socket cap screws'.



Step 7: Monitor mounting

Clip your monitors onto their corresponding bracket or arm, then adjust into your desired position.

Note:

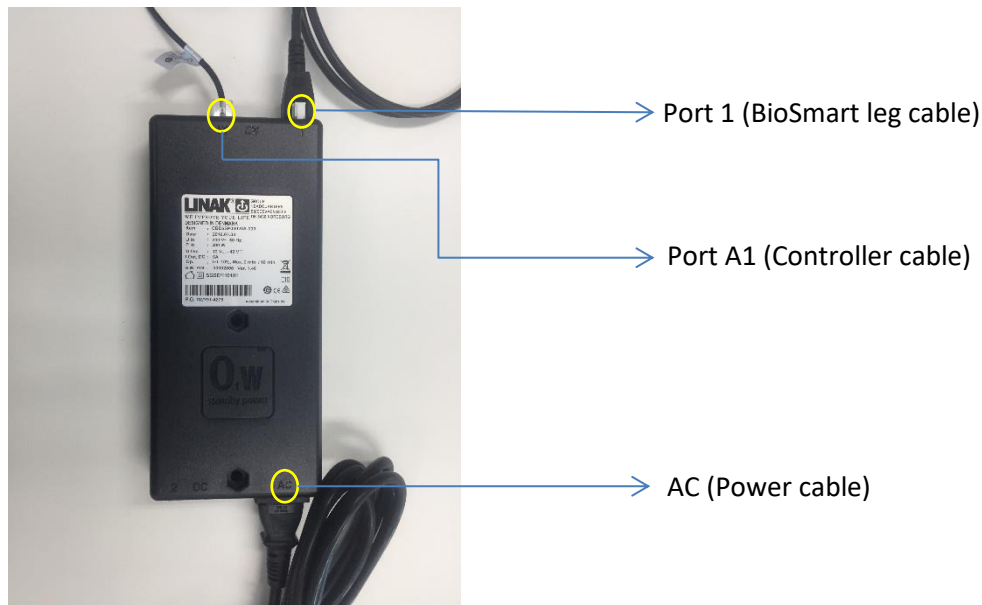
- Pull until the mount clicks into place



Step 8: Electronics

Connect electronics to the BioSmart and then to power (as shown below). Then test your BioSmart function by using the up/down control buttons.

Note: If the BioSmart does not initially react, then hold the down button for 10 seconds to reset it.

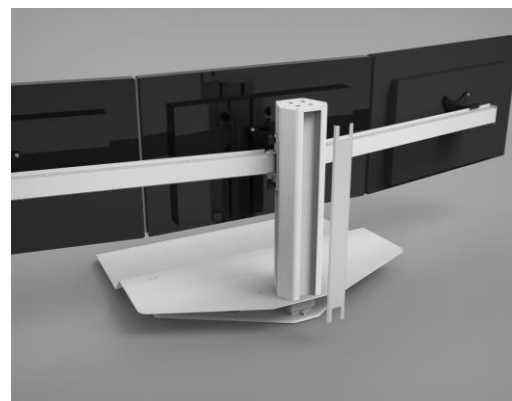


Step 9: Connect your monitors and Cable management

Connect your monitors to your computer and power (as usual).

If desired: Unclip the *Cable Cover* from the back of the column, place your monitor cables inside and then clip it back into place.

The *Velcro straps* underneath the *Keyboard Tray* can also be used for cable management.



**Need more assistance with the setup of your BioSmart?
Please refer to the complete BioSmart User Guide at:**

www.IntegraTransform.com.au

Or Contact Integra Transform Directly

Ph: +61 03 9359 3133

support@integrasystems.com.au